

# A Future Vision of Design Practice in the Context of Uncertainty, Rapid Change & Inequities

Dr. Sarah Dooling

The University of Texas

Grow Green Landscape Professional Training



**High Line Park New York, NY**

Flood water receding in Onion Creek, 2013



The public boat ramp at Cypress Creek Park on Lake Travis has been out of use since the water receded past its end in 2011. Since then, the entire lagoon on which the park is situated has dried.

In NYC, data downloaded from temperature sensors, water level loggers, and time lapse cameras help assess bioswale performance.



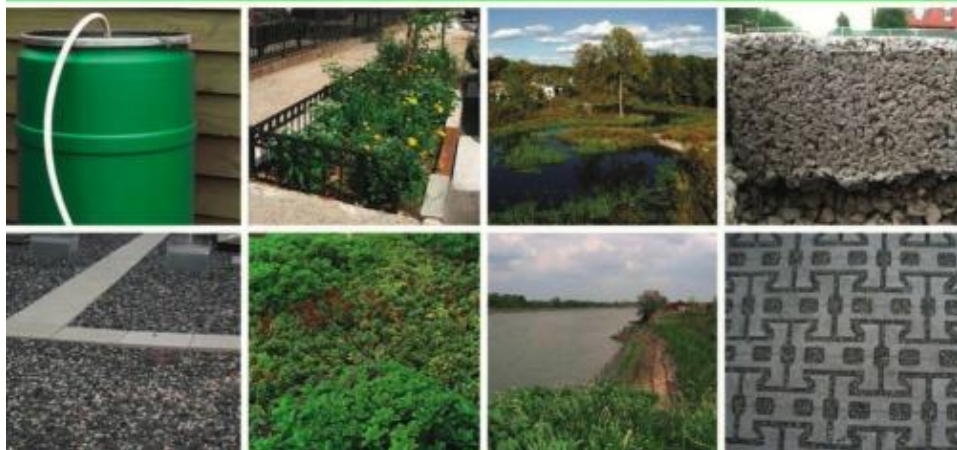
In NYC, 2,000 curbside gardens, also called bioswales, will have the capacity to collect and absorb more than 4 million gallons of stormwater when it rains. It is estimated that the bioswales will capture more than 200 million gallons of stormwater each year.



# NYC GREEN INFRASTRUCTURE PLAN

A SUSTAINABLE STRATEGY FOR CLEAN WATERWAYS

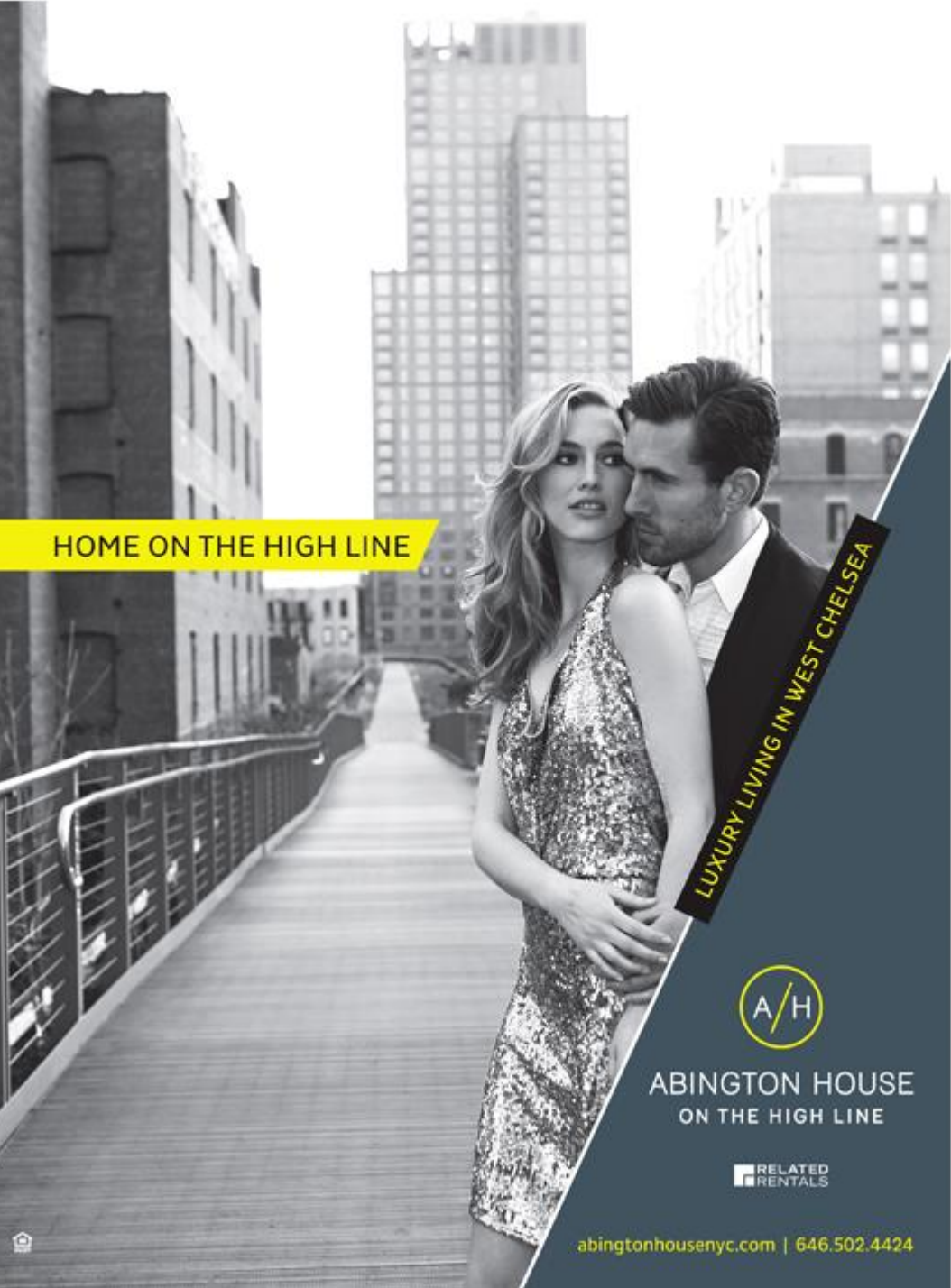
Michael R. Bloomberg, Mayor  
Cas Holloway, Commissioner



## Green City, Clean Waters



*WRT Philly's bold plan for urban landscape restoration envisions peeling back the hard surfaces and creating a 'giant sponge'*



HOME ON THE HIGH LINE

LUXURY LIVING IN WEST CHELSEA



ABINGTON HOUSE  
ON THE HIGH LINE

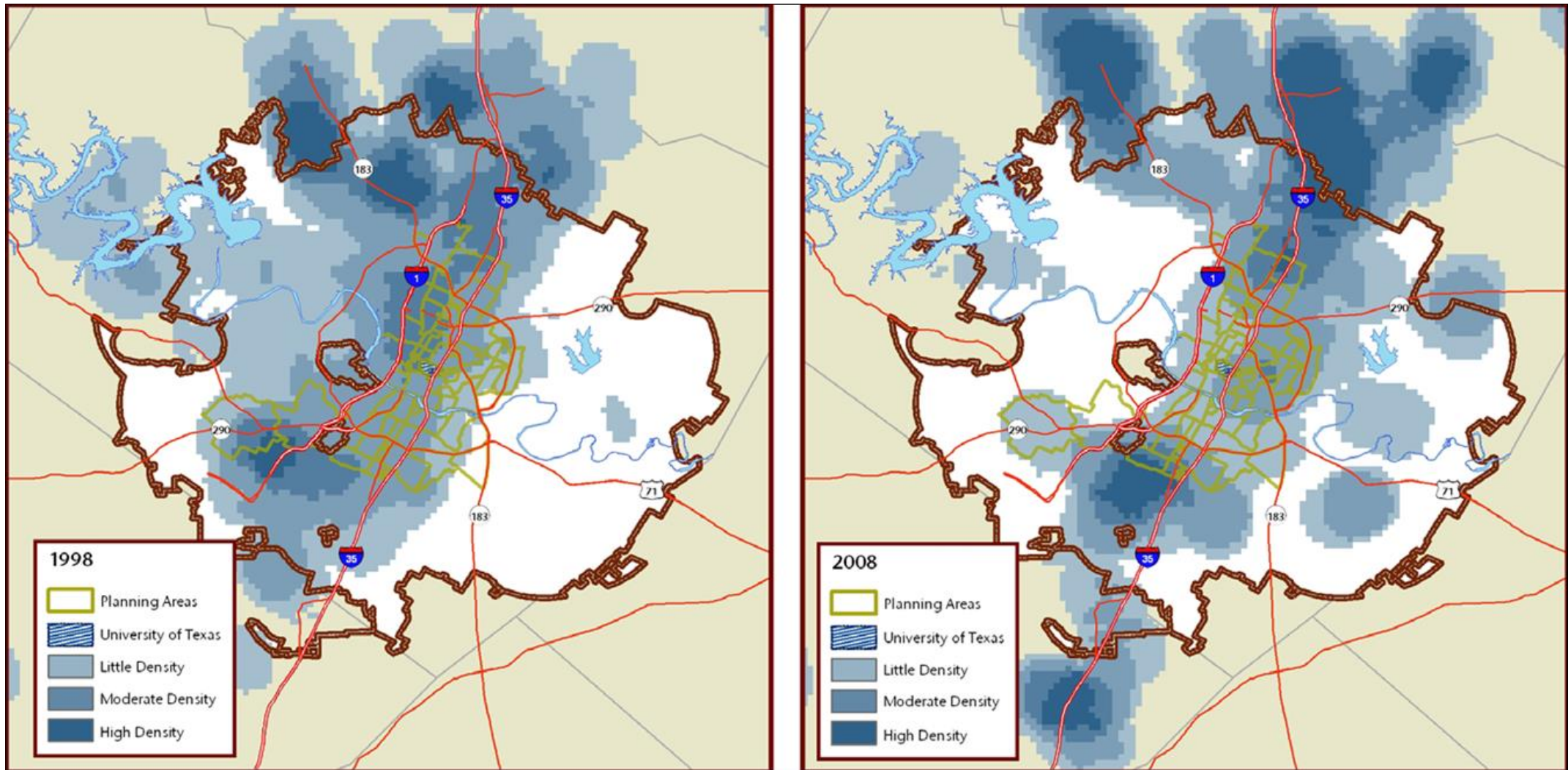


[abingtonhousenyc.com](http://abingtonhousenyc.com) | 646.502.4424

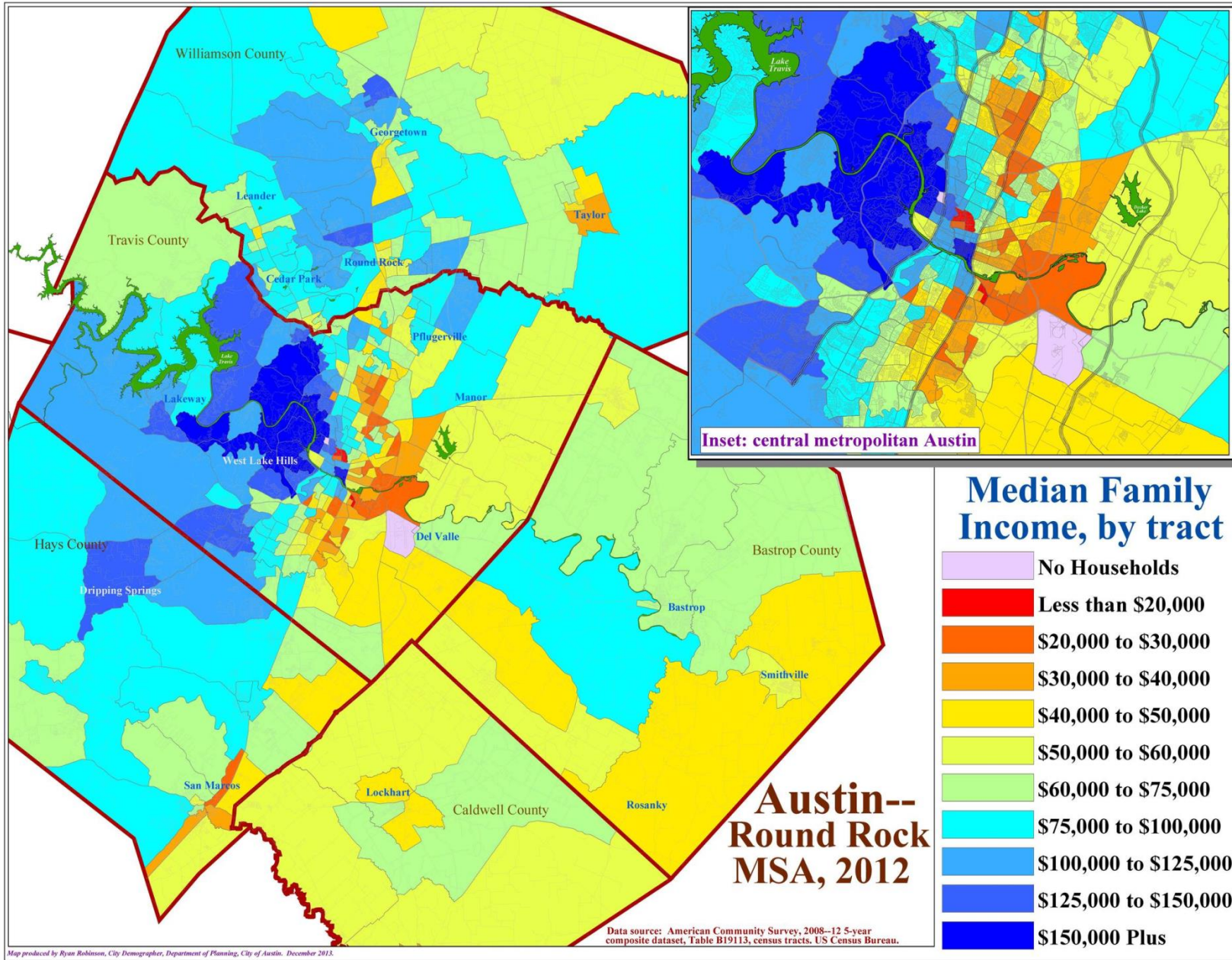


ABINGTON HOUSE  
ON THE HIGH LINE  
LUXURY RENTALS  
212 500-0800  
PRE-BOOK





Detached single-family housing units meeting 51% to 85% MFI around Austin, Texas. (Comprehensive Market Study)

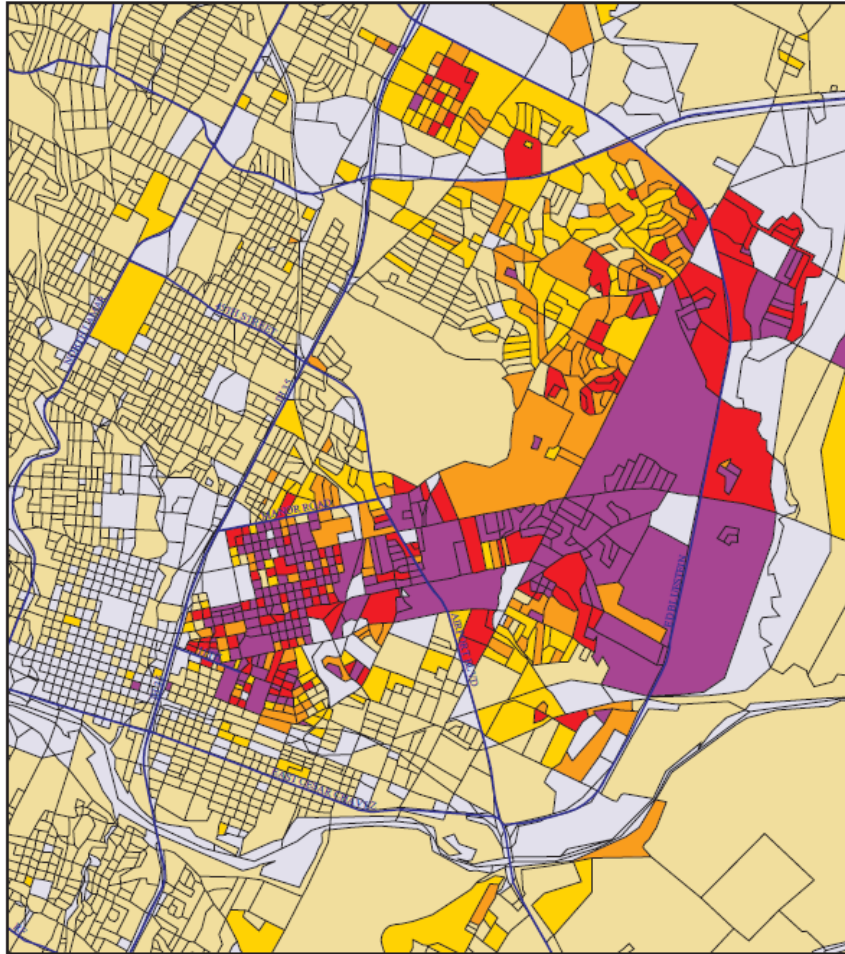




# Changing African-American Landscape in East Austin

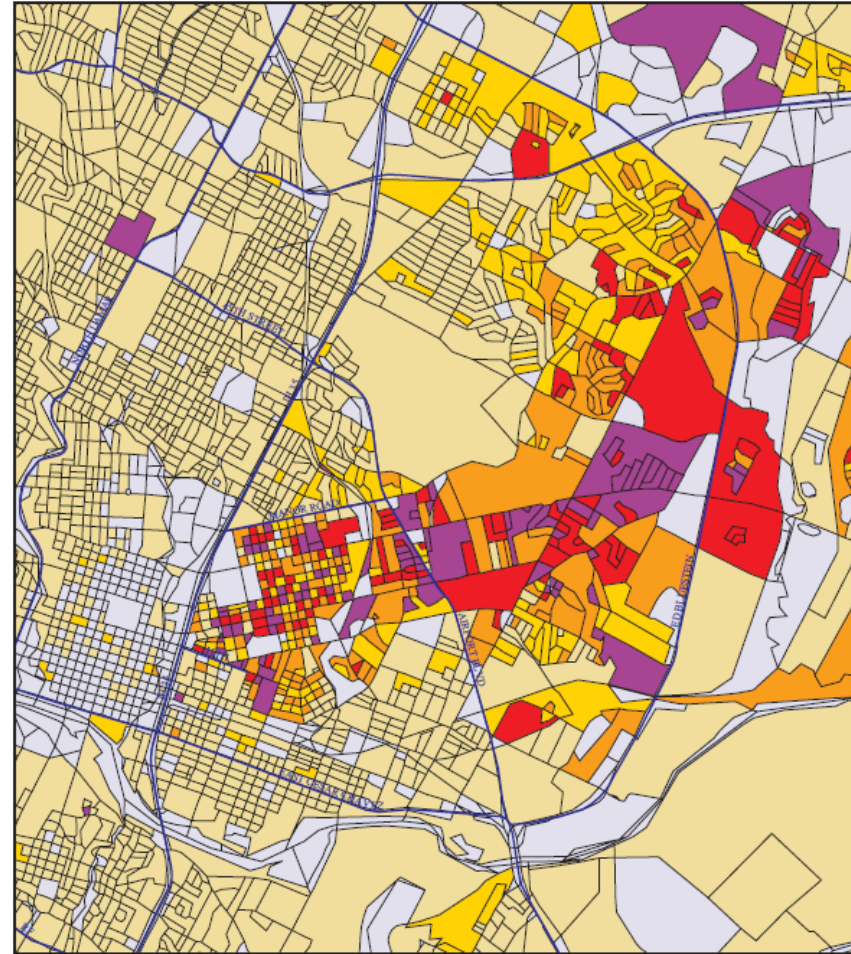
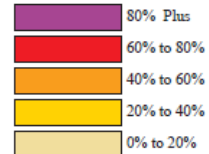
African-American Population Concentrations, 1990 and 2000.

Austin, Texas. 1990 Census and Census 2000 Data.



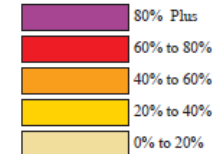
1990 Population

Percent African-American



2000 Population

Percent African-American





Thank you

[sarah.dooling@utexas.edu](mailto:sarah.dooling@utexas.edu)

