

**Suburban:** consistent with full and limited purpose areas outside of Urban and CBD

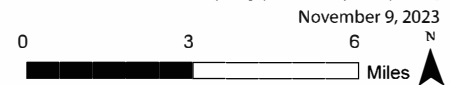
**Urban**

**CBD**

**PARKLAND DEDICATION GEOGRAPHIC AREAS**  
**Boundaries for Establishing Fees**  
**in Accordance with Texas Local Government Code**  
**Section 212.209**

- Central Business District Area
- Urban Area
- Suburban Area

This product is for informational purposes and may not have been prepared for or be suitable for legal, engineering, or surveying purposes. It does not represent an on-the-ground survey and represents only the approximate relative location of property boundaries. This product has been produced by the Parks and Recreation Department for the sole purpose of geographic reference. No warranty is made by the City of Austin regarding specific accuracy or completeness.



November 9, 2023